

Eddy Current Equipment

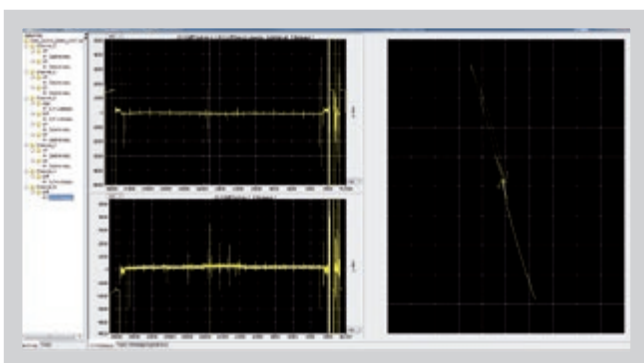
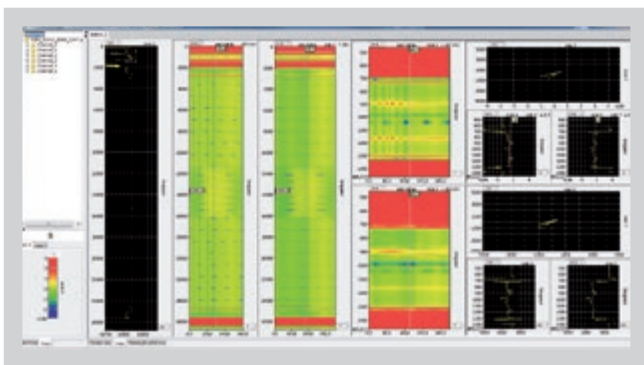
S₂ G₂-800



- » Exceptional Price/Performance
- » High Speed Real-time Data Collection
- » Fast Inspection Speed
- » Multifrequency & Multi channel
- » Multi Techniques:
Array RFT, Array NFT, Array FLT, Array ECT

TUBES AND SURFACES INSPECTION WITH EDDY CURRENT:

- » STEAM GENERATOR
- » CONDENSERS
- » AIR CONDITIONNERS
- » FEEDWATER HEATERS
- » PIPES & WELDS



Eddy Current Software Analysis

The solution for your
Eddy current inspection



SOFTWARE / PC BASED AUTOMATED SOFTWARE ANALYSIS :

Software for analysis of Eddy Current data contains all the familiar features to analyze, review and report on acquired Eddy Current data.

Tube geometry analysis : will automatically detect and position the support plates and the tube structure.

Detection and Classification : will use his various algorithms to detect, classify and position the defects.

Type of Data : will analyze multiple file formats coming from inspection performed by array probes or bobbin probes.

S2 G2-800 SYSTEM SPECIFICATIONS FOR (ECT ARRAY AND ARRAY REMOTE FIELD)

General

Power	120 VAC or 220 VAC +/-10% automatic selection, 48Hz to 63Hz
Size and Weight (W x D x H)	29x25x15cm Maximum weight with all modules installed: 4,5Kgs
Computer Interface	1000 Base-T Fast Ethernet
Compliance	CE, Rohs, EDF
Housing	Completely sealed enclosure
Operating Temperature	0° to 50°C
Inputs / Outputs	<ul style="list-style-type: none"> » 1ea RJ45 ethernet 1000 Base T » 1ea 41 Pin Probe connectors on the main frame » 1ea 36 Pin Probe Connector on the main frame » 1ea Multi-contacts Auxiliary Connectors » Probe Interface module interchangeable

Eddy Current Main Frame Specifications

Frequency Range	20Hz to 1 MHz
Drive Module	Multiplexed Mode Continuous Mode Super Multiplexed Mode
Probe Drives	2
Drive Voltage	0-20 VPP
Input Coil Channels	8 16 Inputs with the dual probe Module
Output Channels	40 Continuous mode 128 Multiplexed mode 640 Super Multiplexed mode
A/D Conversion	24 bits
Digital Data	16 bits
Number of Frequencies	5

Remote Field Eddy Current

Frequency Range	20Hz to 25KHz
Drive Voltage	20VPP
Probe Drives	2
Output Channels	16 Continuous modes
Acquisition Rate	40KHz
Number of Frequencies	5
Output Current	1A

Others specifications

Communication	TCP/IP Protocol on fast Ethernet link
Alarms	4 independent real time alarms
Probe Motor Controller	Embedded controller and Power supply for motorized MRPC
Probe pusher Controller	2 Probe pusher Power supply will be supported at one time (Dual probe module in option)

Probe Technologies

2 Probe will be supported at one time with the dual probe module
2 x 41 pin connectors are provided for probe connection for all technologies
2 x 6 Pin Jaeger connectors are provided for French market probe connections
Array : Tube and Surface array Probes with Internal or External Multiplexer
MRPC : Probe heads up to 8 diff pairs Cross wounded with the dual probe module
Bobbin : Standard Bobbin